

973

**DIVINA MD****Tipologia:** lana**Composizione:** 100% lana vergine**Larghezza:** 150 cm**Peso:** 820 g/mtl**Design:** Finn Sködt**Pulizia:** i liquidi rovesciati devono essere assorbiti immediatamente con un panno pulito e asciutto.Arrmet raccomanda di verificare le schede di tutti i prodotti sul sito [www.arrmet.it](http://www.arrmet.it).

Le macchie di penna e pennarello potrebbero essere permanenti.

**Type:** wool**Composition:** 100% new wool**Width:** 150 cm**Weight:** 820 g/lm**Design:** Finn Sködt**Cleaning:** the spilled liquids must be absorbed immediately with a clean, dry cloth.Arrmet recommends to check data sheets for all products on the website [www.arrmet.it](http://www.arrmet.it).

Pen and marker stains could be permanent.



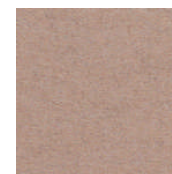
203



343



353



413



453



363



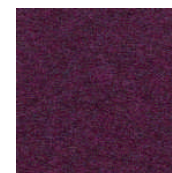
613



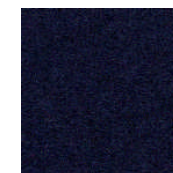
633



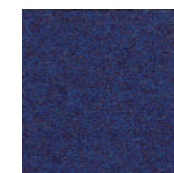
653



683



783



773



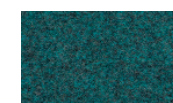
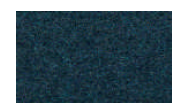
743



733



713

**Resistenza al fuoco / Flame resistance**

EN 1021-1/2  
 BS 5852 (2-5)  
 CA TB 117-2013  
 DIN 4102 B2  
 Önorm B1/Q1  
 NFD 60 013  
 UNI 9175 1IM  
 AS/NZS 1530.3  
 IMO FTP Code 2010 (8)

**Solidità alla luce / Light fastness**

UNI EN ISO 105-B02 (5-7)

**Resistenza all'abrasione / Abrasion resistance**

UNI EN ISO 12947 (≈ 45.000 Martindale)

**Solidità allo sfregamento / Fastness to rubbing**

UNI EN ISO 105-X12 (a secco/dry rubbing 4-5)

UNI EN ISO 105-X12 (a umido/wet rubbing 4)

**Pilling**

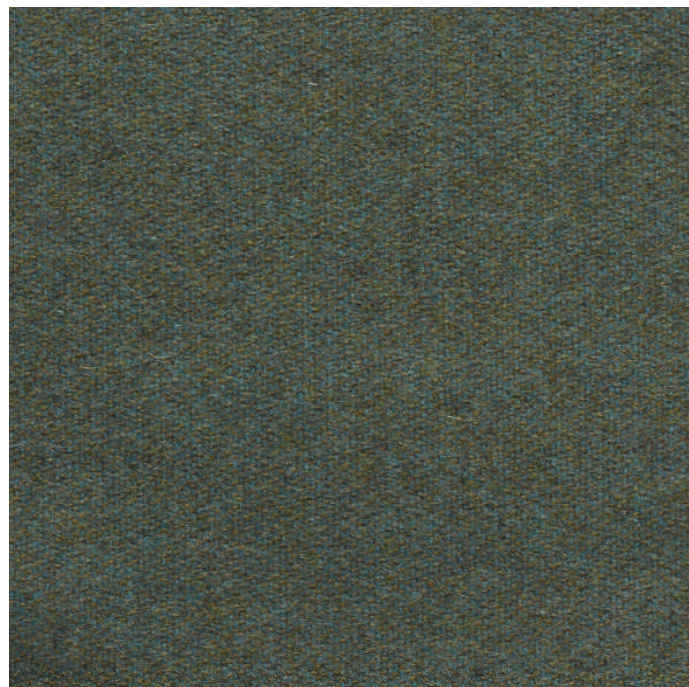
UNI EN ISO 12945 (3)

**Note**

Leggere differenze di colore fra una partita e l'altra sono da considerarsi normali

**Notes**

Light colour differences between lots must be considered normal



042

**Resistenza al fuoco / Flame resistance**EN 1021-1/2  
IMO A.652(16)**Solidità alla luce / Light fastness**

UNI EN ISO 105-B02 (5)

**Resistenza all'abrasione / Abrasion resistance**

UNI EN ISO 12947 12kpa (≈ 80.000 Martindale)

**Pilling**

UNI EN ISO 1512434-0 (3)

**ST. MORITZ****Tipologia:** lana**Composizione:** 80% lana, 20% poliammide**Larghezza:** 140 cm**Peso:** 440 g/mtl**Pulizia:** i liquidi rovesciati devono essere assorbiti immediatamente con un panno pulito e asciutto.Arrmet raccomanda di verificare le schede di tutti i prodotti sul sito [www.arrmet.it](http://www.arrmet.it).

Le macchie di penna e pennarello potrebbero essere permanenti.

**Type:** wool**Composition:** 80% wool, 20% polyamide**Width:** 140 cm**Weight:** 440 g/lm**Cleaning:** the spilled liquids must be absorbed immediately with a clean, dry cloth.Arrmet recommends to check data sheets for all products on the website [www.arrmet.it](http://www.arrmet.it).

Pen and marker stains could be permanent.

**Note**

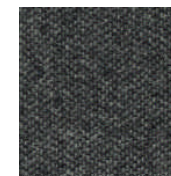
Leggere differenze di colore fra una partita e l'altra sono da considerarsi normali

**Notes**

Light colour differences between lots must be considered normal



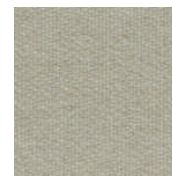
155



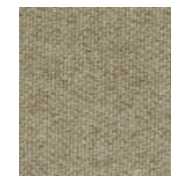
159



162



001



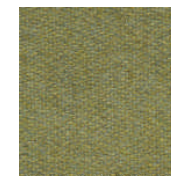
005



025



047



034



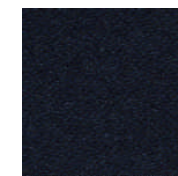
038



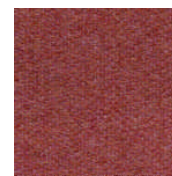
130



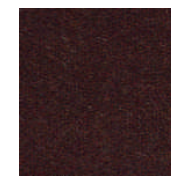
142



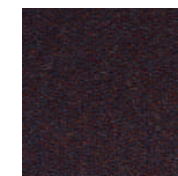
148



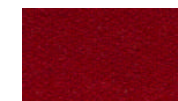
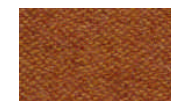
108

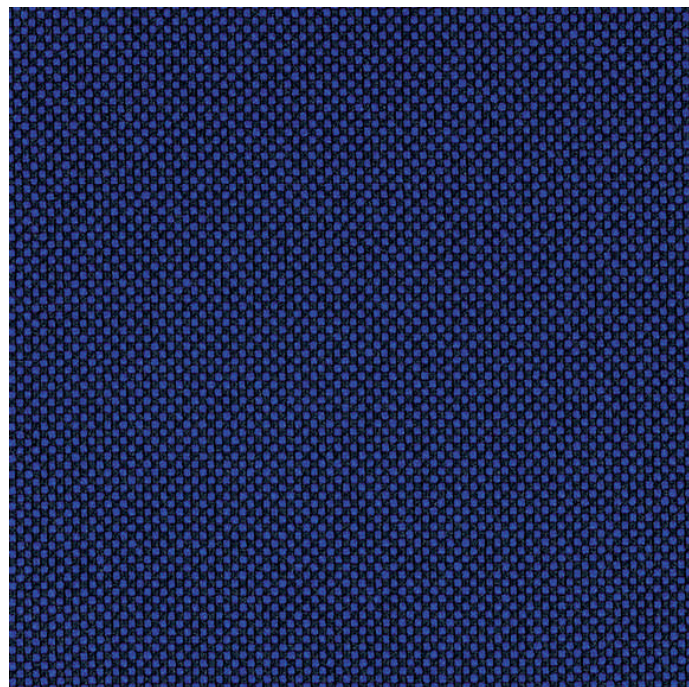


075



078





66136

**Resistenza al fuoco / Flame resistance**

EN 1021-1/2  
BS 5852 (0,1-5)  
CA TB 117-2013  
BS 7176  
DIN 4102 B1  
DIN EN 13501-1 B-s1,d0  
NFP 92-503/504/505 M1  
ÖNORM B1/Q1  
UNI 9175 1IM  
FAR/JAR 25.853 (a) (i) (ii)

**Solidità alla luce / Light fastness**

UNI EN ISO 105-B02 (5-8)

**Resistenza all'abrasione / Abrasion resistance**

UNI EN ISO 12947-2 (≈ 80.000 Martindale)

**Solidità allo sfregamento / Fastness to rubbing**

UNI EN ISO 105-X12 (a secco/dry rubbing 4-5)  
UNI EN ISO 105-X12 (a umido/wet rubbing 4-5)

**Pilling**

UNI EN ISO 12945-2 (5)

**GO CHECK**

**Tipologia:** trevira

**Composizione:** 100% poliestere (Trevira cs)

**Larghezza:** 140 cm

**Peso:** 435 g/ml

**Design:** Inger Mosholt Nielsen

**Pulizia:** i liquidi rovesciati devono essere assorbiti immediatamente con un panno pulito e asciutto.

Armet raccomanda di verificare le schede di tutti i prodotti sul sito [www.armac.it](http://www.armac.it).

Le macchie di penna e pennarello potrebbero essere permanenti.

**Type:** trevira

**Composition:** 100% polyester (Trevira cs)

**Width:** 140 cm

**Weight:** 435 g/lm

**Design:** Inger Mosholt Nielsen

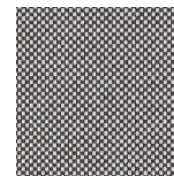
**Cleaning:** the spilled liquids must be absorbed immediately with a clean, dry cloth. Armet recommends to check data sheets for all products on the website [www.armac.it](http://www.armac.it). Pen and marker stains could be permanent.

**Note**

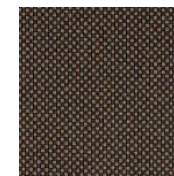
Leggere differenze di colore fra una partita e l'altra sono da considerarsi normali

**Notes**

Light colour differences between lots must be considered normal



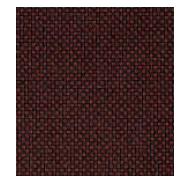
60079



61139



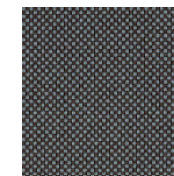
61140



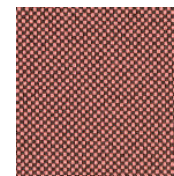
61145



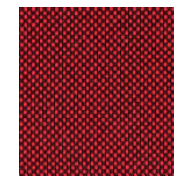
60084



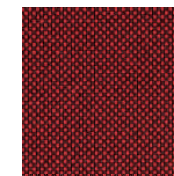
60083



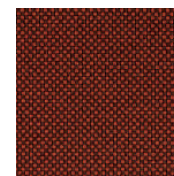
64183



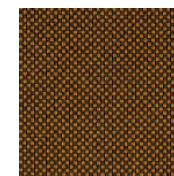
64175



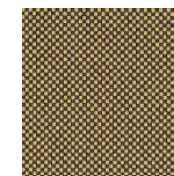
64172



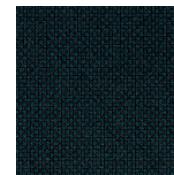
61144



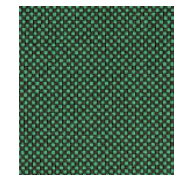
61143



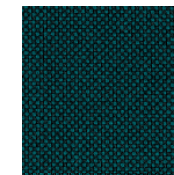
61142



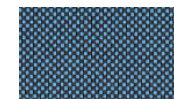
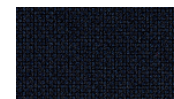
68149

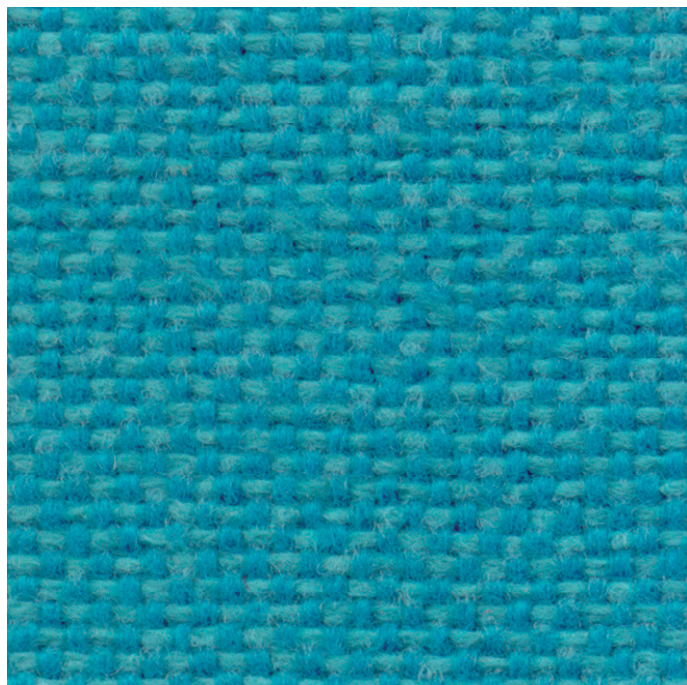


68169



68152





9609

**JET**

**Tipologia:** trevira  
**Composizione:** 100% poliestere (Trevira cs)  
**Larghezza:** 140 cm  
**Peso:** 365 g/ml  
**Pulizia:** i liquidi rovesciati devono essere assorbiti immediatamente con un panno pulito e asciutto. Arrmet raccomanda di verificare le schede di tutti i prodotti sul sito [www.arrmet.it](http://www.arrmet.it). Le macchie di penna e pennarello potrebbero essere permanenti.

**Type:** trevira  
**Composition:** 100% polyester (Trevira cs)  
**Width:** 140 cm  
**Weight:** 365 g/lm  
**Cleaning:** the spilled liquids must be absorbed immediately with a clean, dry cloth. Arrmet recommends to check data sheets for all products on the website [www.arrmet.it](http://www.arrmet.it). Pen and marker stains could be permanent.

**Resistenza al fuoco / Flame resistance**

- EN 1021-1/2
- BS 5852-2 (5)
- BS 7176
- DIN 4102 B1
- NFP 92501-7 M1
- NFD 60 013
- UNI 9174 - UNI 845 C1
- IMO A.652(16)
- IMO B (5)-(7)-(8)

**Solidità alla luce / Light fastness**

UNI EN ISO 105-B02 (6)

**Resistenza all'abrasione / Abrasion resistance**

UNI EN ISO 12947-2 (≈ 65.000 Martindale)

**Solidità allo sfregamento / Fastness to rubbing**

- UNI EN ISO 105-X12 (a secco/dry rubbing 4-5)
- UNI EN ISO 105-X12 (a umido/wet rubbing 4-5)

**Pilling**

UNI EN ISO 12945-2 (5)

**Note**

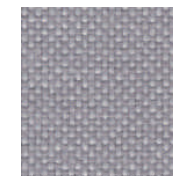
Leggere differenze di colore fra una partita e l'altra sono da considerarsi normali

**Notes**

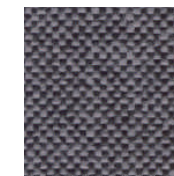
Light colour differences between lots must be considered normal



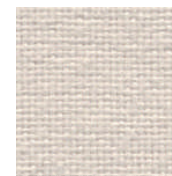
8001



9803



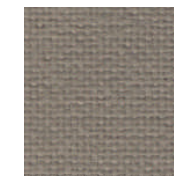
9294



1001



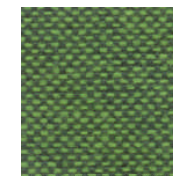
9110



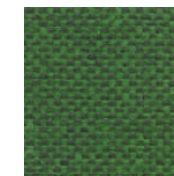
2024



9701



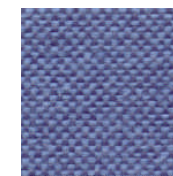
9702



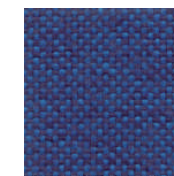
9704



9600



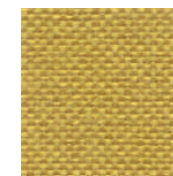
9601



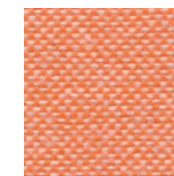
9603



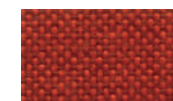
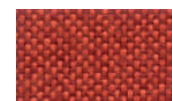
9302



9304



9301





64121

**OBIKA LEATHER+****Tipologia:** similpelle**Composizione:** 66% poliuretano,  
24% poliestere, 10% cotone**Larghezza:** 140 cm**Peso:** 1000 g/mtl**Design:** Inger Mosholt Nielsen / Helene Jensen**Pulizia:** i liquidi rovesciati devono essere  
assorbiti immediatamente con un panno  
pulito e asciutto.Arrmet raccomanda di verificare le schede  
di tutti i prodotti sul sito [www.arrmet.it](http://www.arrmet.it).Le macchie di penna e pennarello potrebbero  
essere permanenti.**Type:** Faux leather**Composition:** 66% polyurethane,  
24% polyester, 10% cotton**Width:** 140 cm**Weight:** 1000 g/lm**Design:** Inger Mosholt Nielsen / Helene Jensen**Cleaning:** the spilled liquids must be  
absorbed immediately with a clean, dry cloth.  
Arrmet recommends to check data sheets  
for all products on the website [www.arrmet.it](http://www.arrmet.it).  
Pen and marker stains could be permanent.

60000



61177



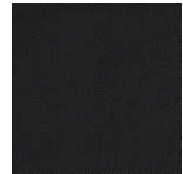
61178



60160



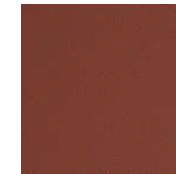
60161



60999



61181



63059



63060

**Resistenza al fuoco / Flame resistance**EN 1021-1/2  
BS 5852 (0,1-5)  
CA TB 117-2013  
BS 7176  
DIN 4102 B1  
NFP 92-503/504/505 M1  
ÖNORM B1/Q1  
UNI 9175 1IM  
FAR/JAR 25.853 (a) (i) (ii)**Solidità alla luce / Light fastness**

UNI EN ISO 105-B02 (5-7)

**Resistenza all'abrasione / Abrasion resistance**

UNI EN ISO 12947-2 (≈ 250.000 Martindale)

**Solidità allo sfregamento / Fastness to rubbing**

UNI EN ISO 105-X12 (a secco/dry rubbing 4-5)

UNI EN ISO 105-X12 (a umido/wet rubbing 4-5)

**Note**Leggere differenze di colore fra una partita  
e l'altra sono da considerarsi normali**Notes**Light colour differences between lots must  
be considered normal

66138



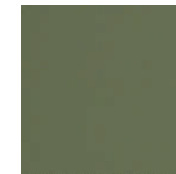
67050



67049



67051



68105



111

**MAGNUM**

**Tipologia:** similpelle

**Composizione:** 88% polivinil cloruro, 7% poliestere, 4% cotone, 1% poliuretano

**Larghezza:** 140 cm

**Peso:** 715 g/m<sup>2</sup>

**Pulizia:** i liquidi rovesciati devono essere assorbiti immediatamente con un panno pulito e asciutto.

Arrmet raccomanda di verificare le schede di tutti i prodotti sul sito [www.arrmet.it](http://www.arrmet.it).  
Le macchie di penna e pennarello potrebbero essere permanenti.

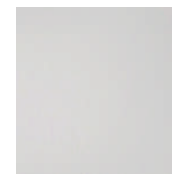
**Type:** faux leather

**Composition:** 88% polyvinyl chloride, 7% polyester, 4% cotton, 1% polyurethane

**Width:** 140 cm

**Weight:** 715 g/m<sup>2</sup>

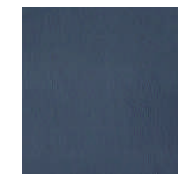
**Cleaning:** the spilled liquids must be absorbed immediately with a clean, dry cloth. Arrmet recommends to check data sheets for all products on the website [www.arrmet.it](http://www.arrmet.it). Pen and marker stains could be permanent.



105



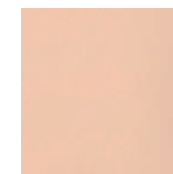
603



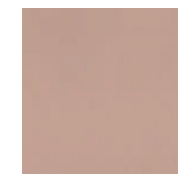
602



100



103



400



503



407



404



310



304



302



001



706



701



**Resistenza al fuoco / Flame resistance**

EN 1021-1/2  
BS 5852 (O-1)  
CA TB 117-2013  
BS 5852 IS 11 (5)  
DIN 4102-1 B1  
NFP 503 M1  
FTP CODE 307(88):10 Annex 7-8  
UNI 9175 1IM

**Solidità alla luce / Light fastness**

UNI EN ISO 105-B02 (≥7)

**Resistenza all'abrasione / Abrasion resistance**

BS EN ISO 5470-2 (≈ 200.000 Martindale)

**Solidità allo sfregamento / Fastness to rubbing**

UNI EN ISO 105-X12 (a secco/dry rubbing ≥5)  
UNI EN ISO 105-X12 (a umido/wet rubbing ≥5)

**Note**

Leggere differenze di colore fra una partita e l'altra sono da considerarsi normali

**Notes**

Light colour differences between lots must be considered normal



99008

**ELMONORDIC III**

**Tipologia:** pelle

**Composizione:** 100% pelle.

**Pulizia:** i liquidi rovesciati devono essere assorbiti immediatamente con un panno pulito e asciutto.

Si consiglia di verificare le schede di tutti i prodotti sul sito [www.armet.it](http://www.armet.it).

Le macchie di penna e pennarello potrebbero essere permanenti.

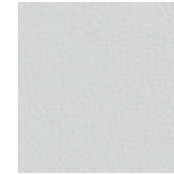
**Type:** leather

**Composition:** 100% pelle

**Cleaning:** the spilled liquids must be absorbed immediately with a clean, dry cloth.

Armet recommends to check data sheets for all products on the website [www.armet.it](http://www.armet.it).

Pen and marker stains could be permanent.



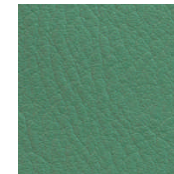
00105



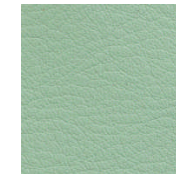
01038



11039



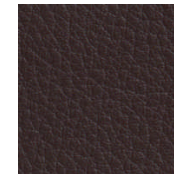
88011



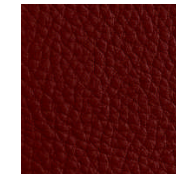
18014



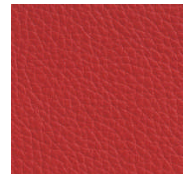
07002



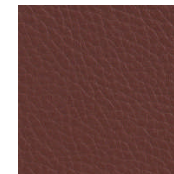
93009



95038



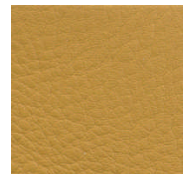
55031



53374



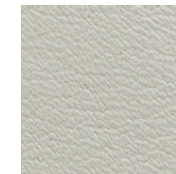
43404



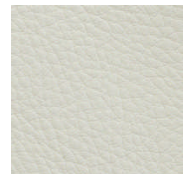
43050



02071



12100



02064

**Resistenza al fuoco / Flame resistance**

EN 1021-1/2  
BS 5852 (5)  
CA TB 117-2013  
ISO 3795  
ISO 8191:1/2  
FAR 25.853(a)  
IMO A652(16)

**Solidità alla luce / Light fastness**

UNI EN ISO 105-B02 (6)

**Solidità allo sfregamento / Fastness to rubbing**

ISO 11640 (a secco/dry rubbing 2000/4)  
ISO 11640 (a umido/wet rubbing 80/4)

**Note**

Leggere differenze di colore fra una partita e l'altra sono da considerarsi normali

**Notes**

Light colour differences between lots must be considered normal